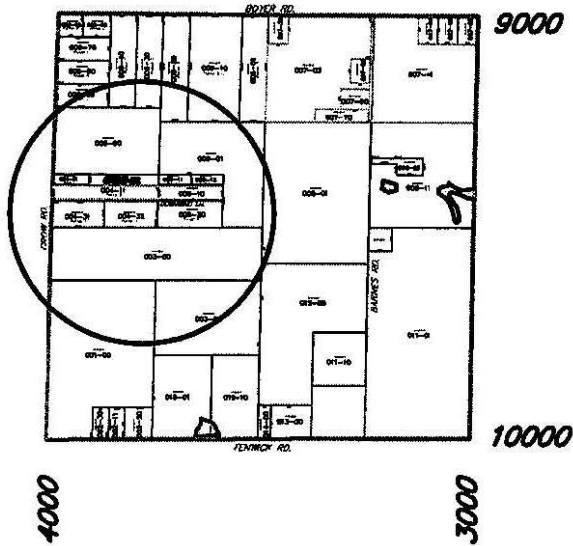


FAIRPALMS TOWNSHIP SECTION 21  
59-010-021



# NEW PRIVATE DR. UPWIND LN.

Fairpalms Township Section 21  
59-010-021

Part of the NW 1/4

DATE 6/29/01

Drawn By D.W.Swain

MONTCALM COUNTY EQUALIZATION DEPT.

005-00

RANGE

4000  
TO  
3500

GROW RD.

