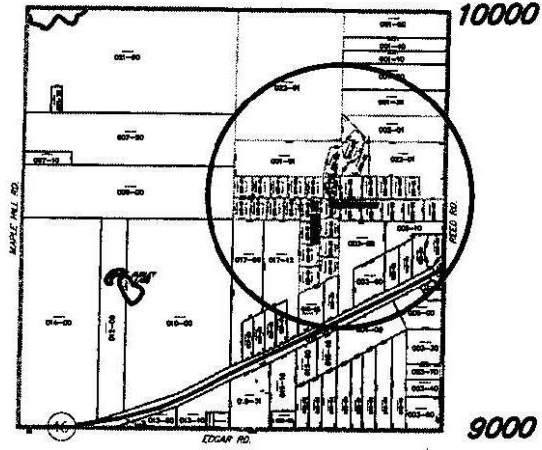


REYNOLDS TOWNSHIP SECTION 14
59-017-014



NEW PRIVATE DR. TIMBERLAND DR.

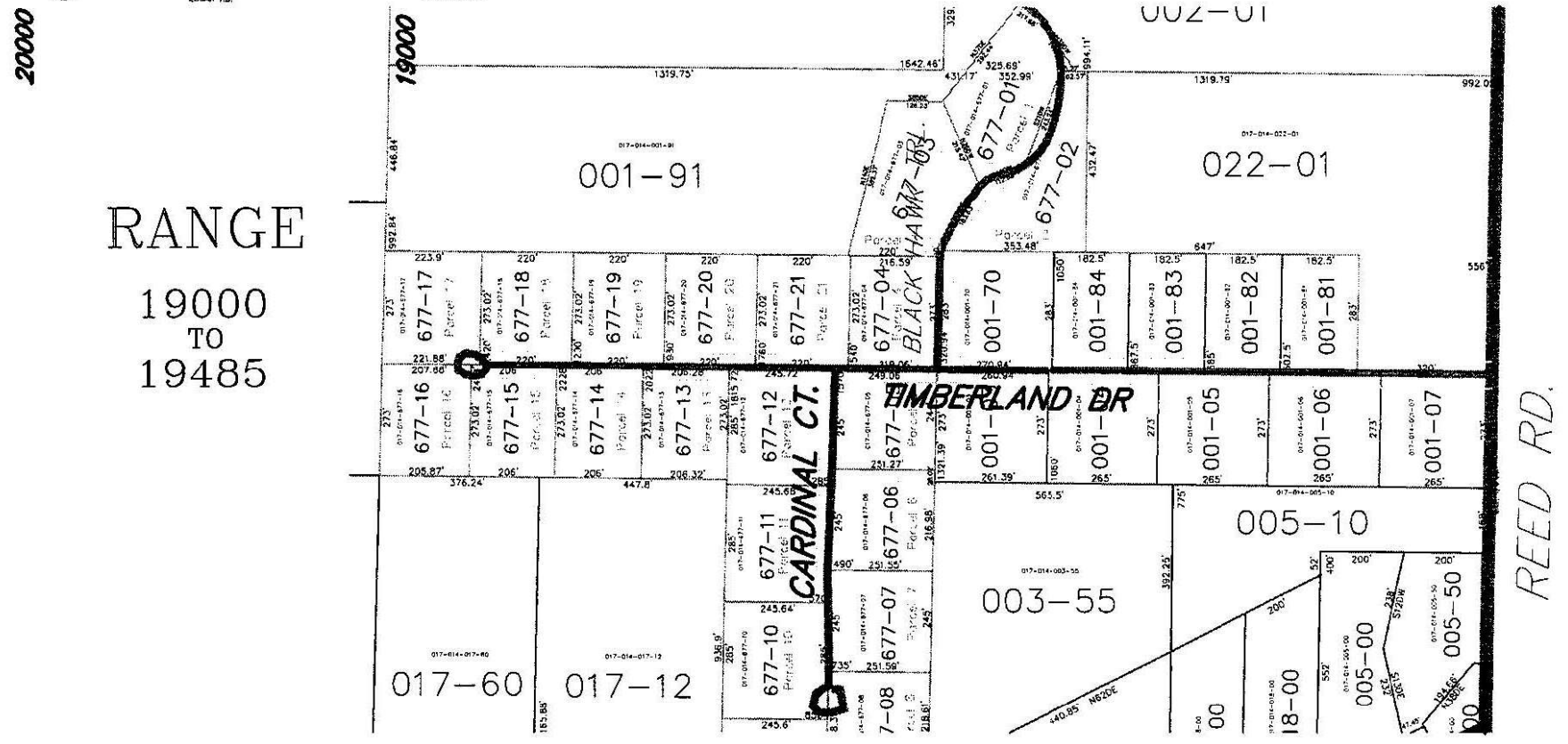
Reynolds Township Section 14
59-017-014

Part of the S 1/2 NE 1/4

DATE 3/21/02

Drawn By D.W.Swain

MONTCALM COUNTY EQUALIZATION DEPT.



RANGE
19000
TO
19485

REED RD.