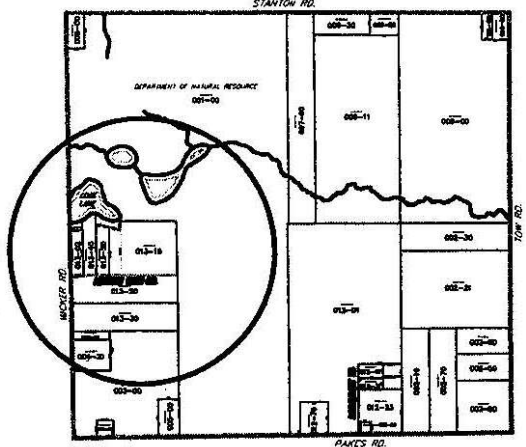


EVERGREEN TOWNSHIP SECTION 2
59-009-002



0

1000

4000

5000

RANGE

4000
TO
4250

NEW ROAD KENNETH WEBB DR.

Evergreen Township Section 2
59-009-002

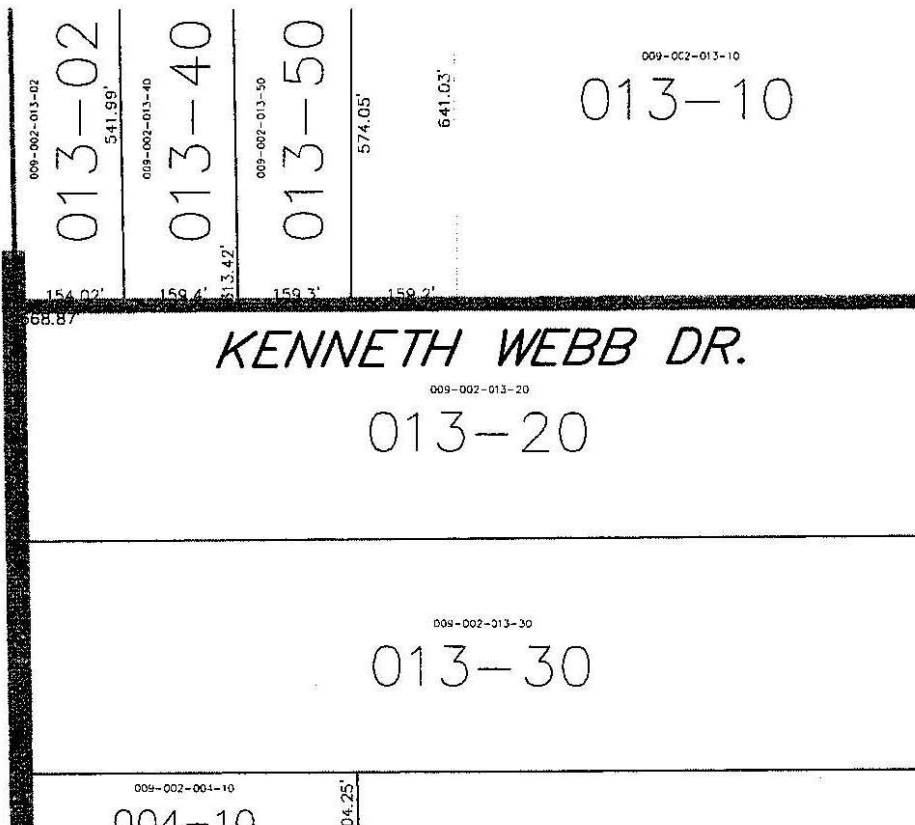
Part of the NW 1/4 SW 1/4

DATE 2/2/96

Drawn By D.W.Swain

MONTCALM COUNTY EQUALIZATION DEPT.

WICKER RD.



009-002-013-02

013-02

541.99'

009-002-013-40

013-40

13.42'

009-002-013-50

013-50

574.05'

009-002-013-10

641.03'

013-10

009-002-013-20

013-20

009-002-013-30

013-30

009-002-004-10

004-10

04.25'