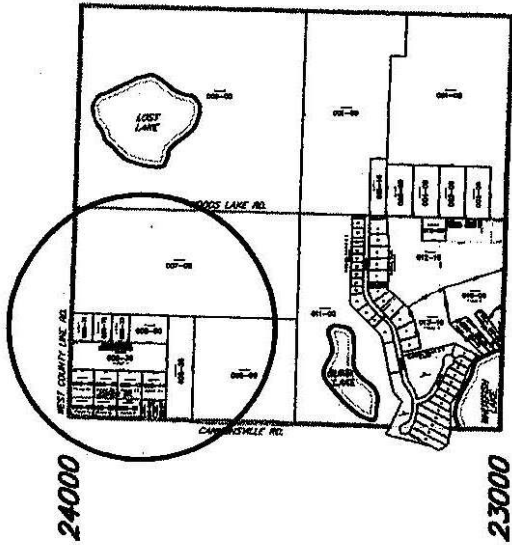


PIERSON TOWNSHIP SECTION 18  
59-015-018



# NEW ROAD JAMES DR.

Pierson Township Section 18  
59-015-018

Part of the SW 1/4 SW 1/4  
DATE 4/21/03

Drawn By D.W.Swain

MONTCALM COUNTY EQUALIZATION DEPT.

## RANGE

24000  
TO  
23750

WEST COUNTY LINE RD.

