

1000

NEW PRIVATE DR.
Hoppy DR.

Evergreen Township Section 9

59-009-009

Part of the SE 1/4

DATE 1/31/2007

Drawn By D.W.Swain

MONTCALM COUNTY EQUALIZATION DEPT.

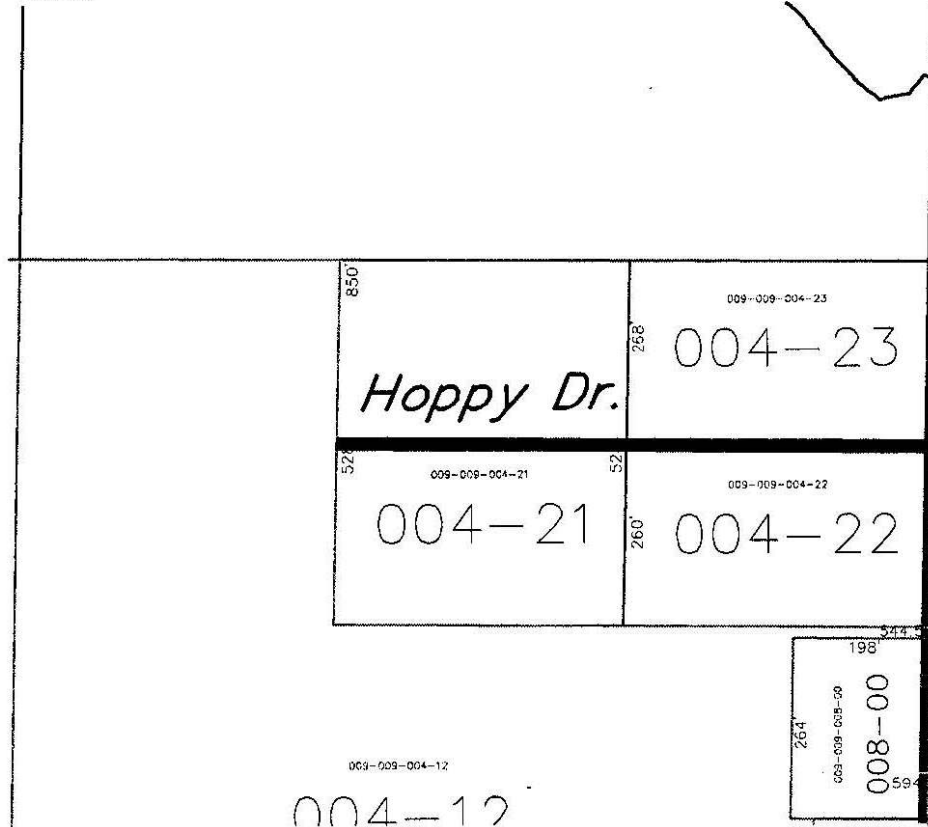
2000

2000

3000

RANGE

3000
TO
2800



TOWNHALL RD.