

3000

NEW ROAD GARNER DR.

Montcalm Township Section 19

59-015-019

Part of the NW 1/4 NE 1/4

DATE 4/8/98

Drawn By D.W.Swain

MONTCALM COUNTY EQUALIZATION DEPT.

4000

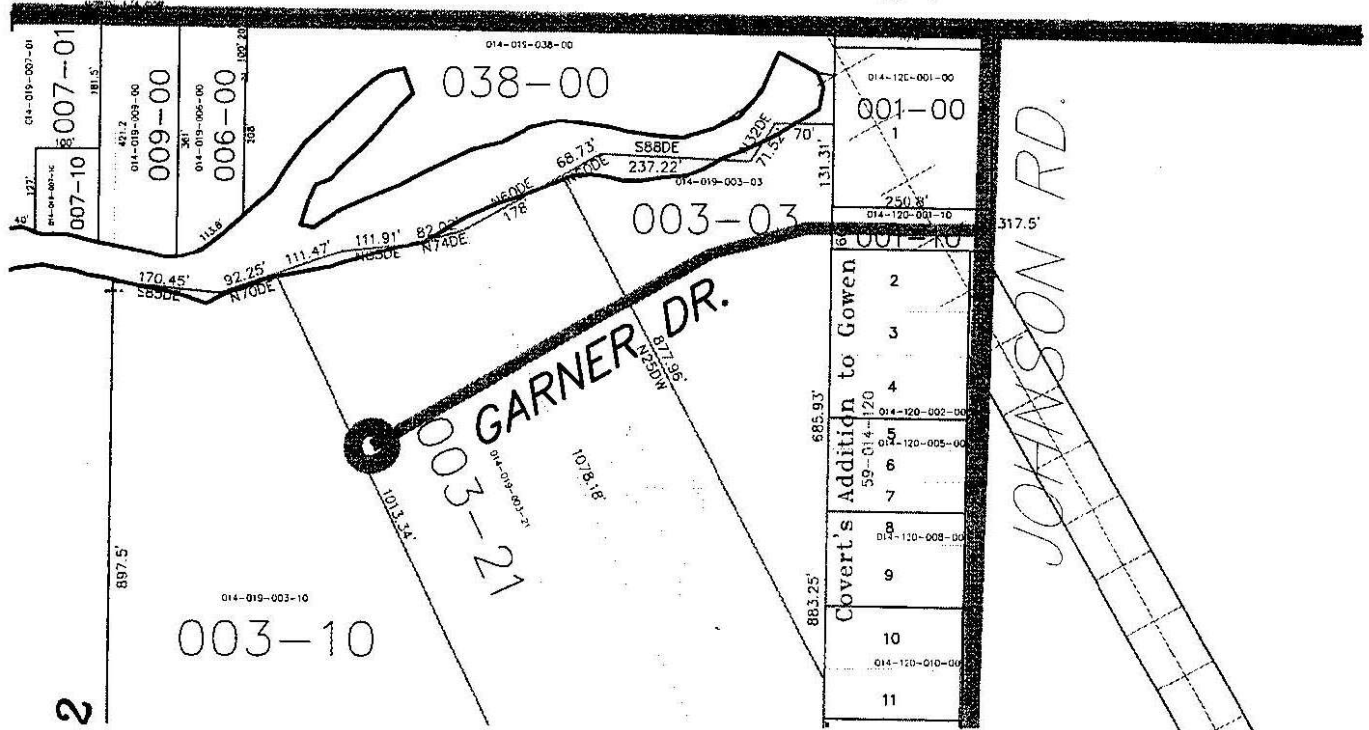
12000

11000

SIDNEY RD.

RANGE

11250
TO
11500



2