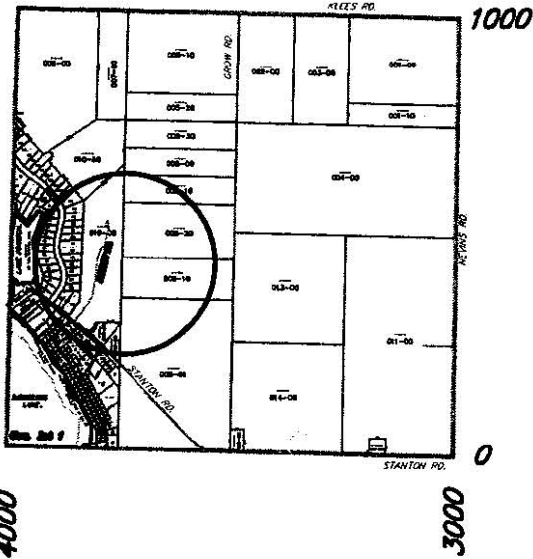


DOUGLASS TOWNSHIP SECTION 33
59-007-033



NEW ROAD BARRETT DR.

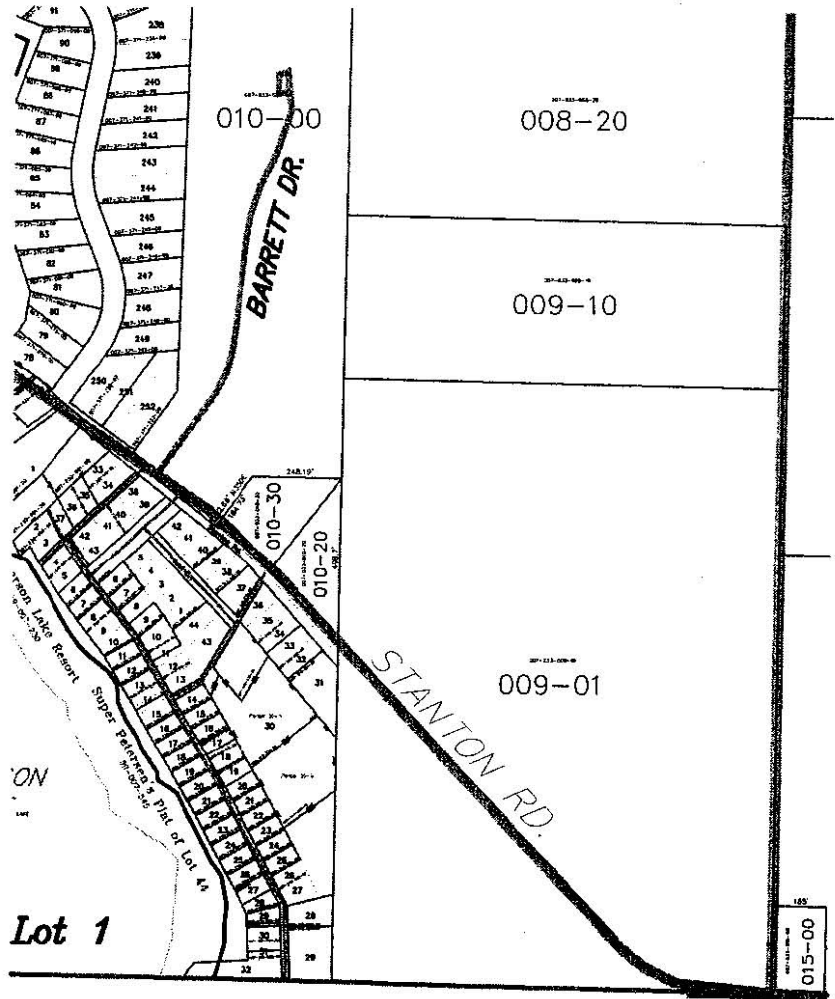
Douglass Township Section 33
59-007-033

Part of the NW 1/4 SW 1/4
DATE 3/10/00

Drawn By D.W.Swain
MONTCALM COUNTY EQUALIZATION DEPT.

RANGE

615
TO
287



Lot 1